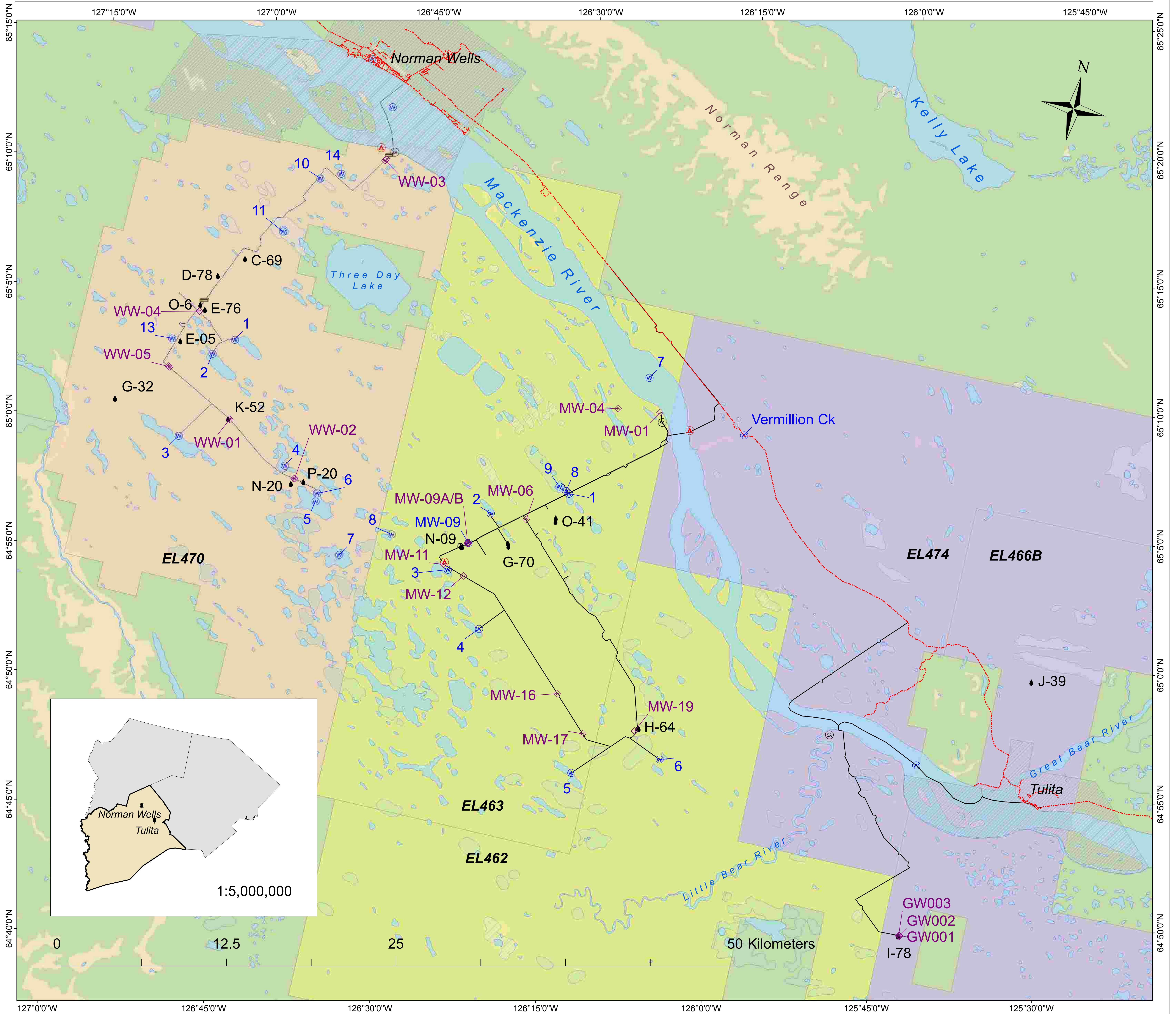


# 2009-2014 Sahtu Oil & Gas Exploration Water Licences Licenced Vs. Used



- ◆ Groundwater Monitoring
- Exploratory Well
- Winter Road
- ⊙ Staging Area
- Access Road
- ▲ Base camp
- ⊙ Water Source
- Storage
- ▨ Community Boundary
- Water
- ▨ Wetland
- Vegetation
- Land

## Oil & Gas Exploration Licence Boundary

- ConocoPhillips Canada Resources Corp.
- Husky Oil Operations Limited
- MGM Energy Corp.

Year	Licenced Vol (m <sup>3</sup> )	Water used (m <sup>3</sup> )
<i>ConocoPhillips Canada Resources Corp</i>		
2013	869,534	41,559
2014	908,616	-
<i>Husky Oil Operations Ltd.</i>		
2012	70,391	31,195
2013	101,606	331
<i>MGM Energy Corp.</i>		
2011	14,500	5,170
2012	28,500	-
2013	96,200	40,112

## Map Description:

This map is for illustrative purposes only. It represents the oil and gas Water Licence activity from 2009 to 2014 in the Tulita district of the Sahtu Settlement Area. The table shows the volume of water licenced and used each year in cubic metres by each proponent.

This map is not a legal document and should not be treated as such.

Projection/Datum: NAD 1983 CSRS Northwest Territories Lambert  
Scale: 1:100,000  
Source:  
AANDC: Oil & Gas Exploration Licence Boundary  
MACA: Community Boundary  
NRC: Winter Road, Land  
NTDB: Wetland, Water, Vegetation

Last Revised: November, 2014

This map was created by the Sahtu Land and Water Board (SLWB).  
Maps of each proponent are also available.

For further information,  
please contact:  
Jacqueline Ho  
Regulatory Support Technician  
Sahtu Land and Water Board  
867-598-2413  
jacqueline.ho@slwb.com