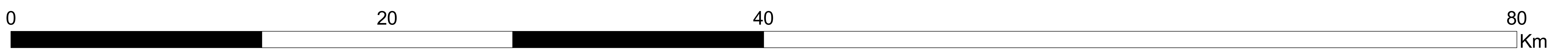
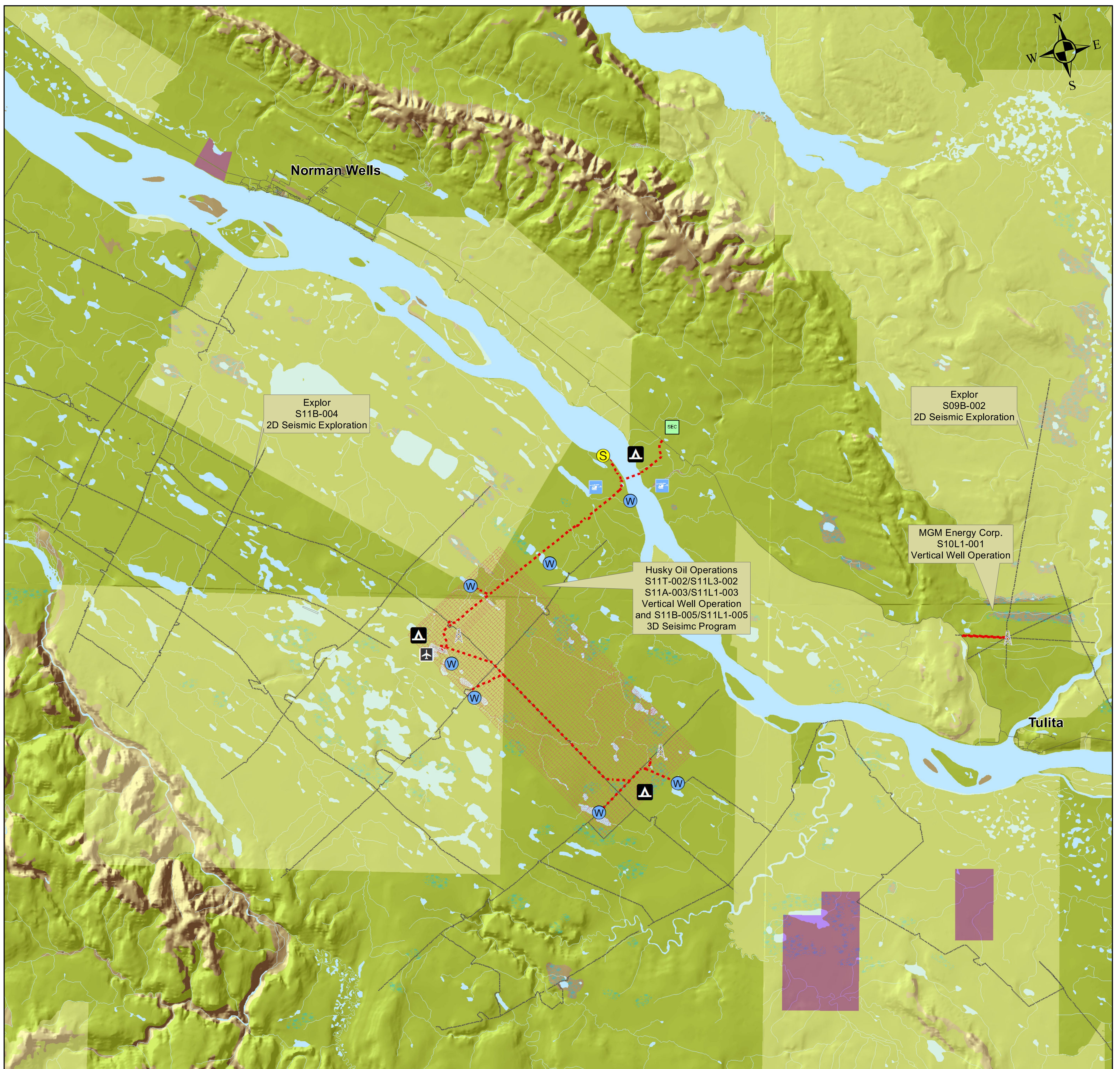


Sahtu Oil & Gas Activity and Exploration Overview Map 2009-2011



Legend

- | | |
|--|-------------------------|
| | Husky 3D Seismic |
| | Explor 2D 5.5m Seismic |
| | Explor 2D 1.5m Seismic |
| | Sahtu Surface Rights |
| | Sahtu Subsurface Rights |
| | Water |
| | Wetlands |
| | Vegetation |
| | |

Map Description

This map shows activities related to Oil and Gas development that have been completed in the Sahtu Region between year 2009 -2011. These activities include vertical drilling operations and seismic exploration (2-D and 3-D)



Projection: NWT Lambert Conformal Conic
Datum: NAD 83
Central Meridian: -112.00
Standard Parallels: 62.70
Data Scale: 1:250,000
Sources: Geobase, Geogratis NTDB, SLUPB, ANNDIC

SLWB Permit and Licences: Explor S09B-002, S11B-004, MGM S10L1-001, S12A-001/S12L1-001, HuskyS11B-005/S11L1-005, S11A-003/S11L1-003, S11T-002/S11L3-002, Conoco S12A-006/S12L1-005
This map is not a legal document. Data is subject to change without notification. The map is for illustrative purposes only. This map may contain errors and/or omissions. Data contained on this map may not be copied, reproduced, or displayed for any purpose other than for which it was originally intended.
This map was created by the Sahtu Land and Water Board on Oct. 17th, 2012. For further information about this map contact:

Ian Brown
Regulatory Specialist
Phone (867) 568-2413 ext. 224
Email: ian.brown@slwb.com